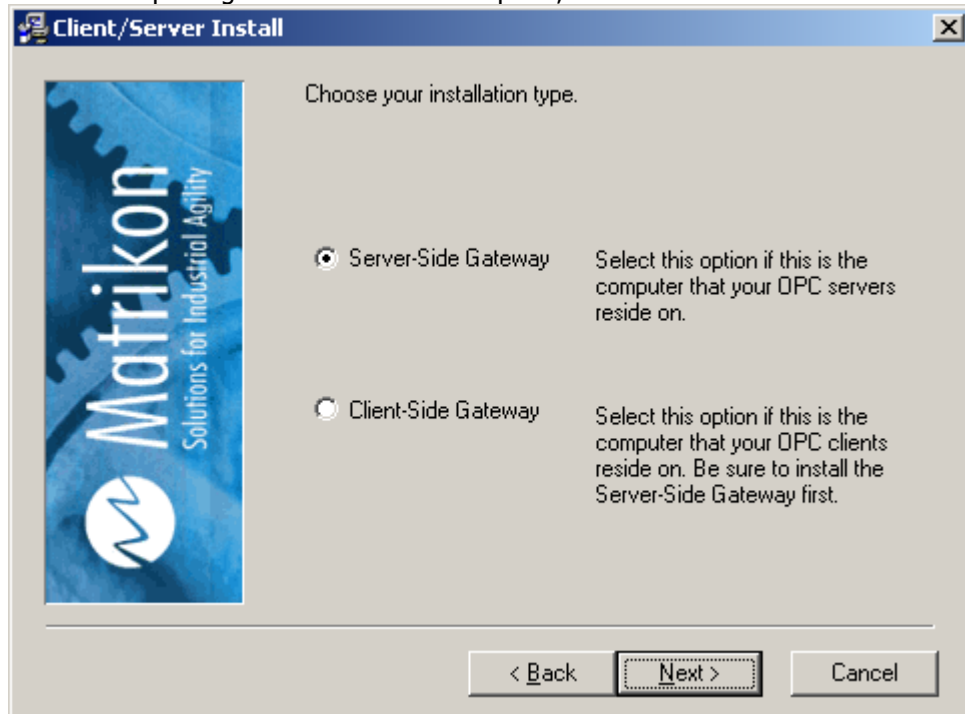


## OPC Tunneller Configuration

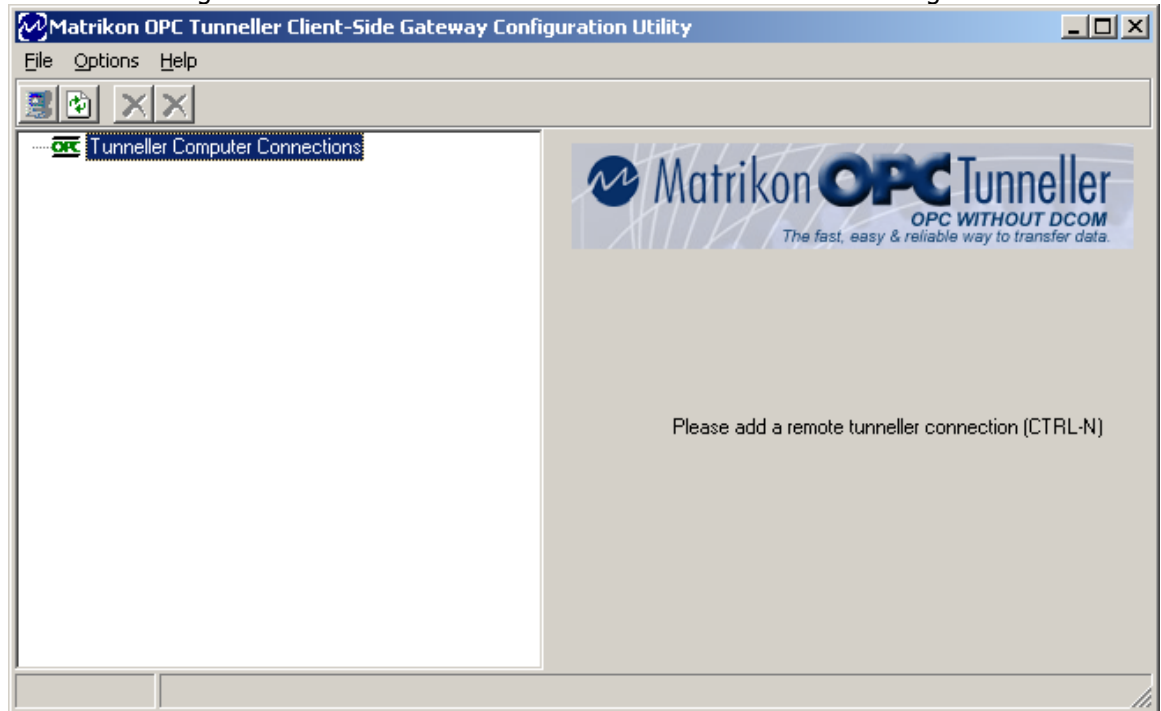
These directions will show the instructions to start up an initial connection with OPC Tunneller.

- 1) Install both components of Tunneller. The same install is used for both of them; you just need to select which component to install on the computer that you are installing on at this point.

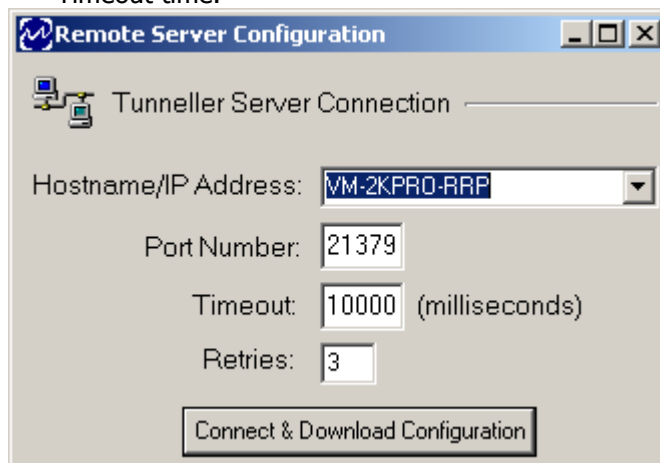
**NOTE:** Newer versions of Tunneller install both components upon installation. If your package does not have this option, it is because it has been done for you.



- 2) After the install, make sure that the "Matrikon OPC Tunneller Server" service is running on the OPC server computer.
- 3) On the OPC Client machine run the Tunneller client configuration utility to add the available OPC servers from the OPC Server Machine to the OPC Client machine.  
Start -> Programs -> Matrikon OPC -> Tunneller -> Tunneller Client configuration.

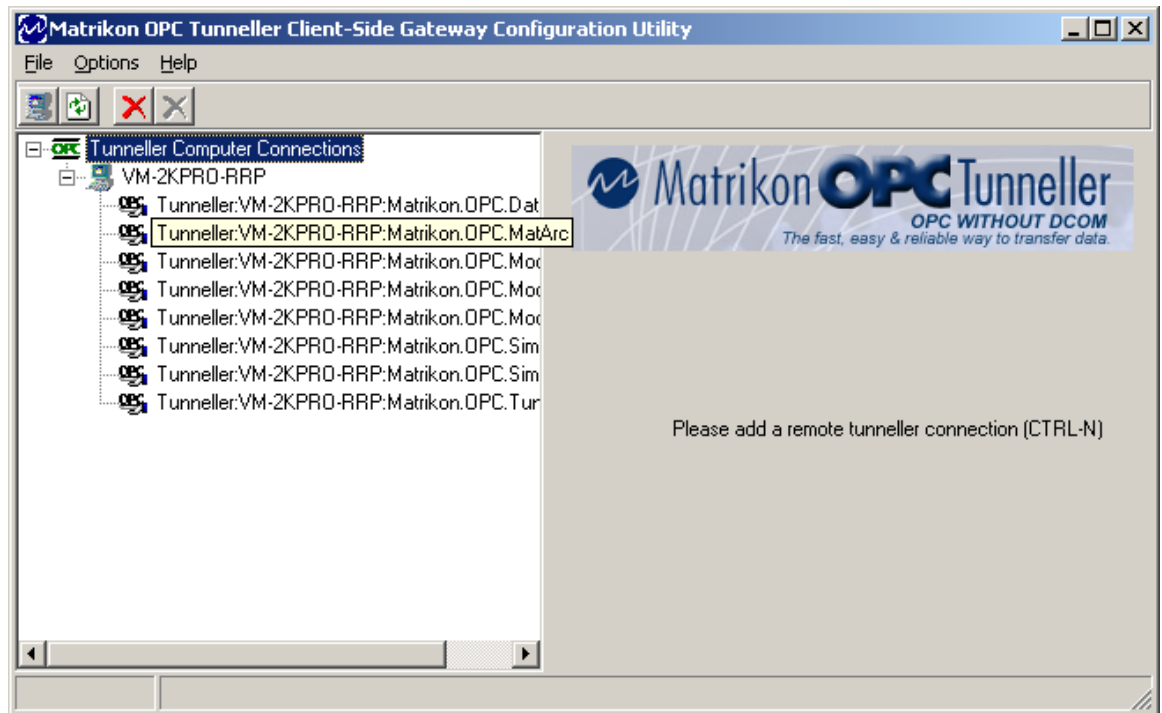


- 4) This Remote Server Configuration will allow you to download a list of available OPC Servers on the Server Machine.
- 5) To do this, please point the Hostname/IP Address to the computer that has Tunneller Server running on it.
- 6) 10 seconds is the default for Tunneller to timeout while trying to add tags.  
**NOTE:** A timeout of 10 seconds and 3 retries does **NOT** mean a total timeout of 30 seconds. The server will try to add all tags within the Timeout time (10s), if it does not succeed it will start from the beginning and try to do all available tags again within the Timeout time.

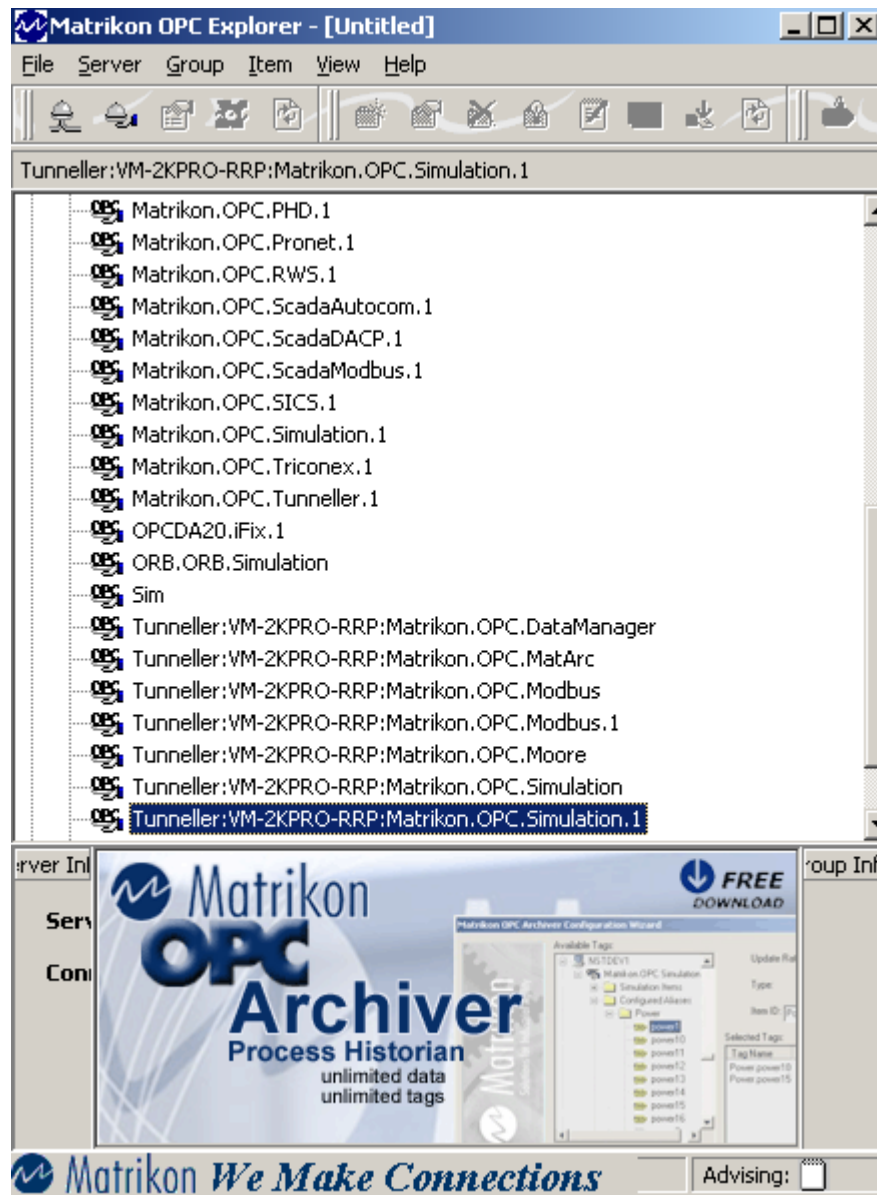


- 7) Once these options are setup, Click "Connect & Download Configuration" to receive a list of available OPC Servers.

8) The screenshot below shows the new Tunnelled Connections available.



9) Start OPC Explorer on the client machine.



5) Now there are new Tunnelled connections available on the Client machine. Any client capable of browsing for available OPC Servers will now see these connections.

6) If your client is not capable of browsing for available OPC Servers the syntax to prefix to your OPC Program ID is as follows:

Tunneller:<client node name>:<Program ID>  
EG.  
Tunneller:Jordan-Hicks:Matrikon.OPC.Simulation

Your **Tunneller** is now Setup for all OPC Servers on the Server Machine.