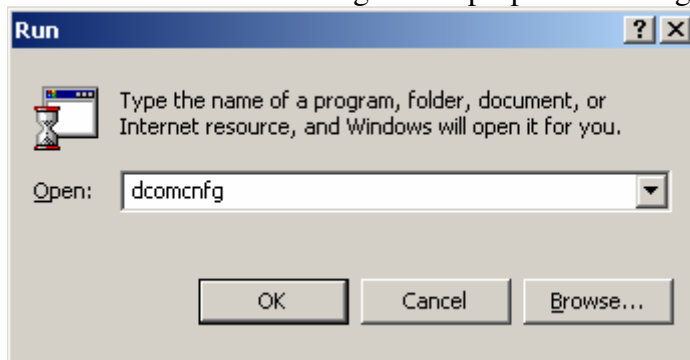


Windows 2000 DCOM Configuration For OPC

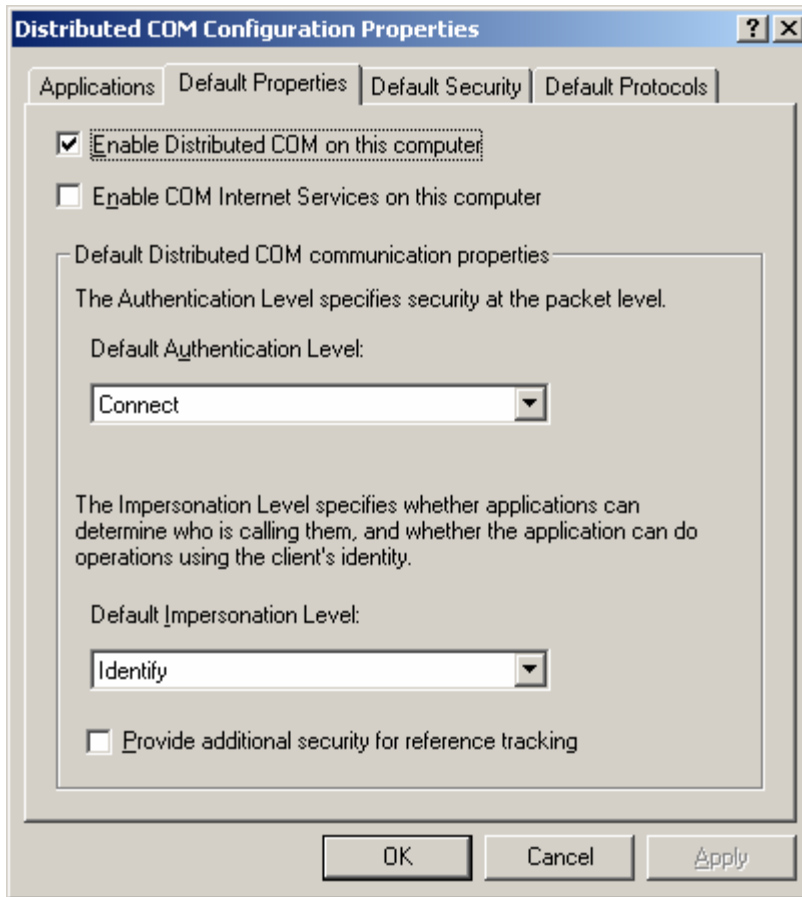
NOTE: These directions will open up DCOM to all users.

NOTE: These steps are used to make sure that communication can be established. After these steps have been followed to establish communication, DCOM permissions can be tightened to allow only the necessary users.

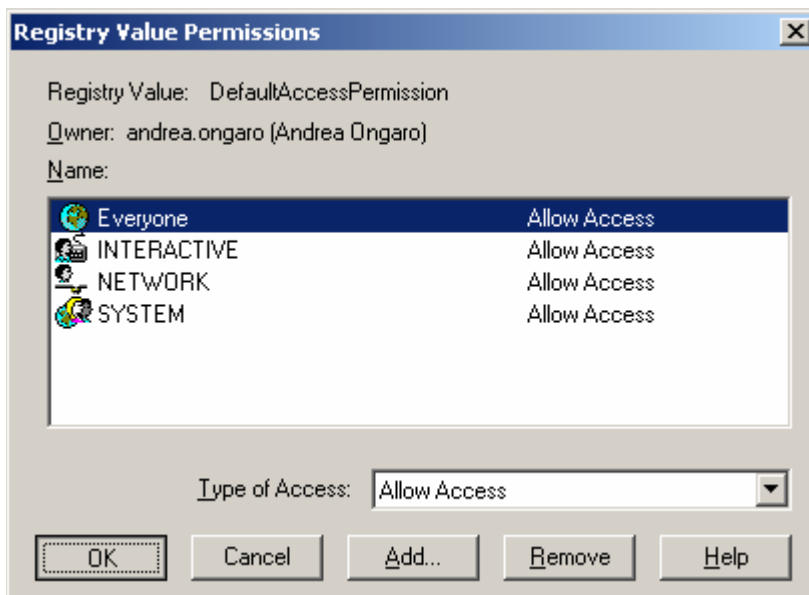
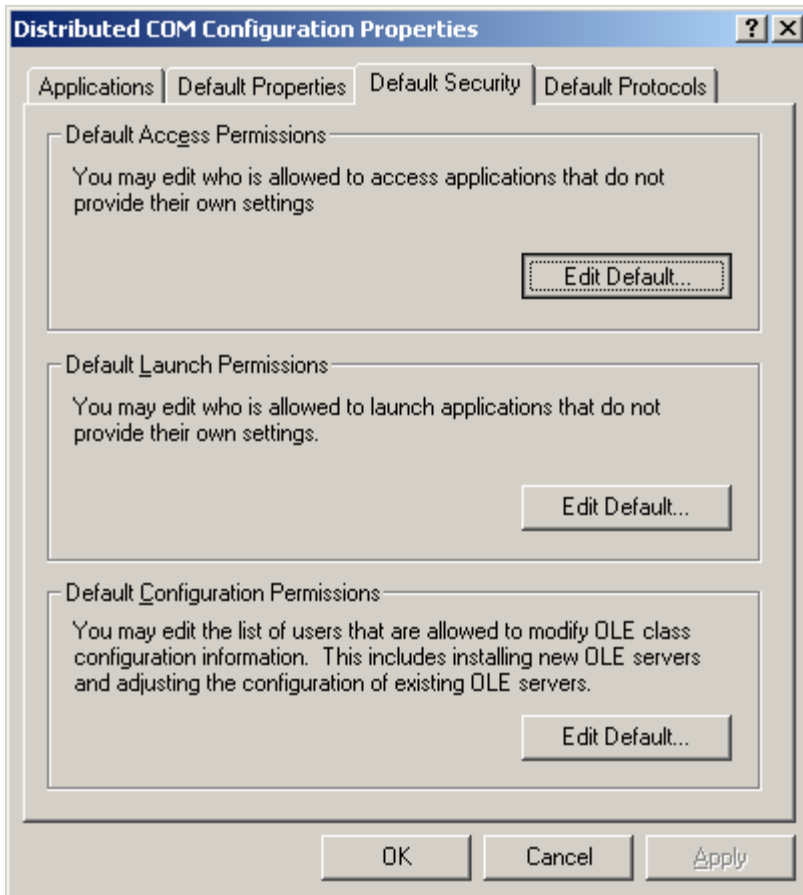
- 1) From the start menu go to run, and type in dcomcnfg, this will open the Distributed COM configuration properties Dialogue box.

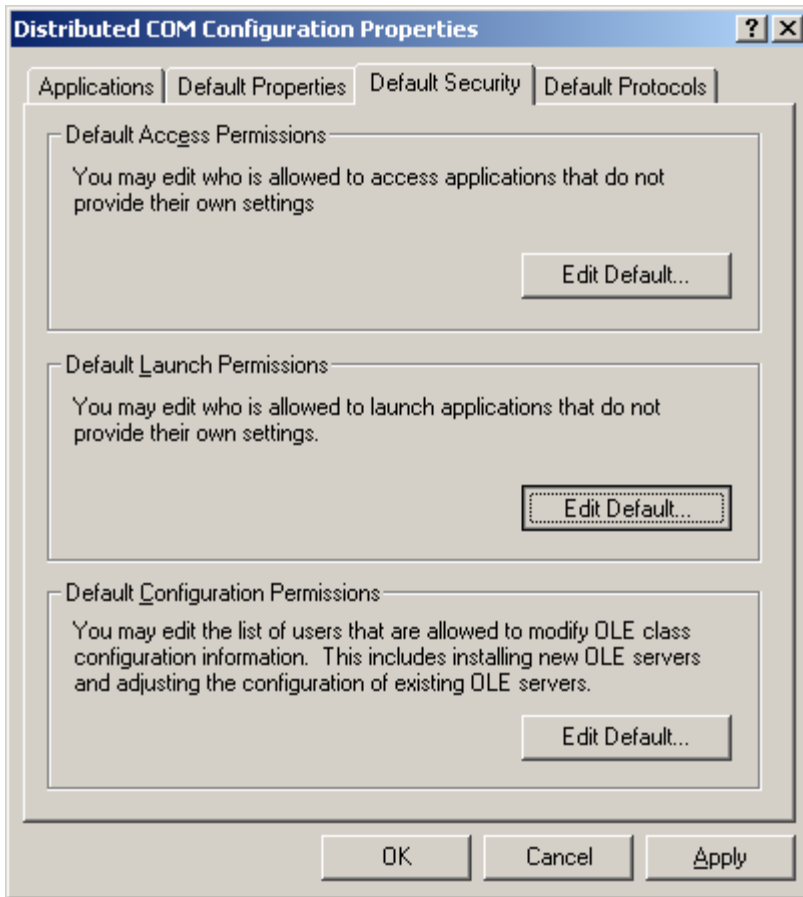


- 2) Under the Default Properties Tab; make sure that DCOM is enabled, the authentication level is "Connect," and the impersonation level is "Identify."

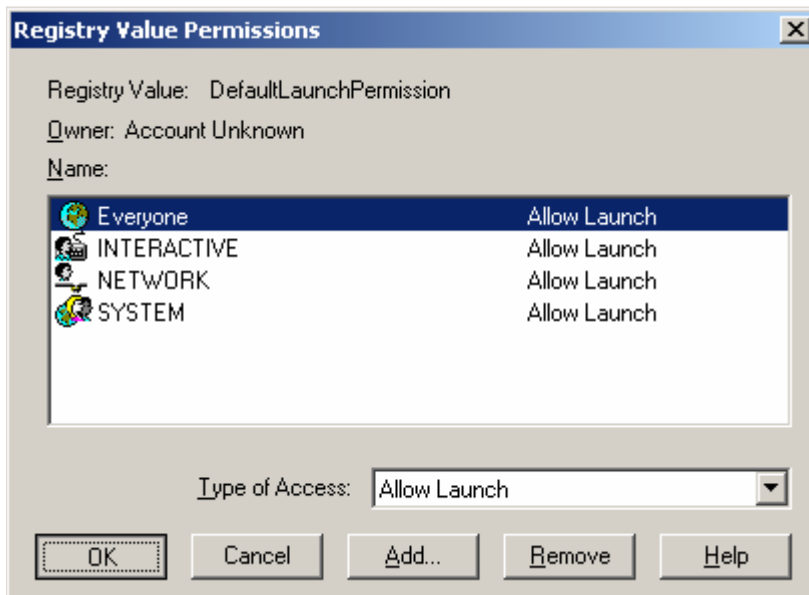


- 3) Under the "Default Security" tab, under "Default Access Permissions" press "Edit Default."





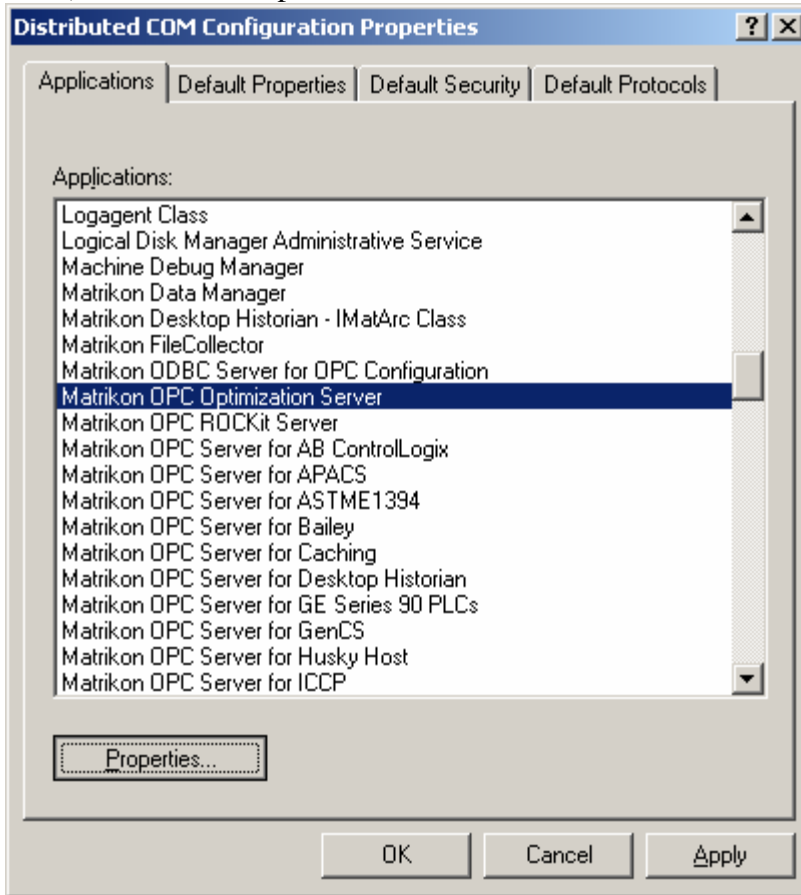
- 4) Ensure the groups of "Everyone," "Interactive," "Network," and "System" are included, with full permissions allotted.



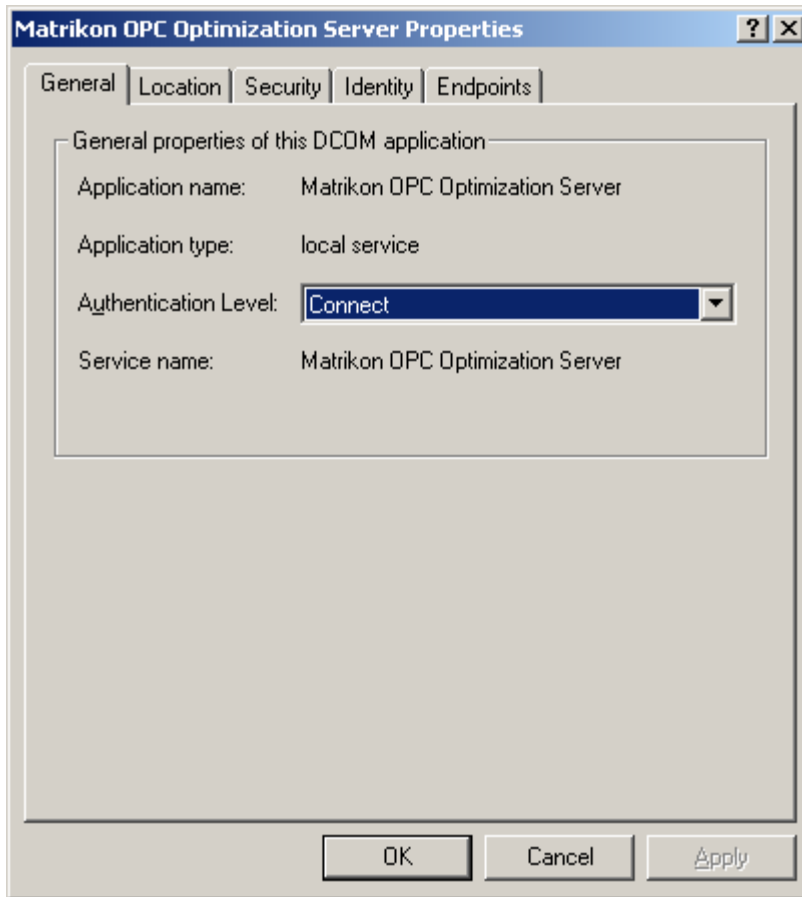
- 5) Please do the same for "Default Launch Permissions."

6) Under the “Applications” tab, please select your OPC Server from the list. (Please note that do this for **ALL** OPC Servers, as well as OPCEnum.)

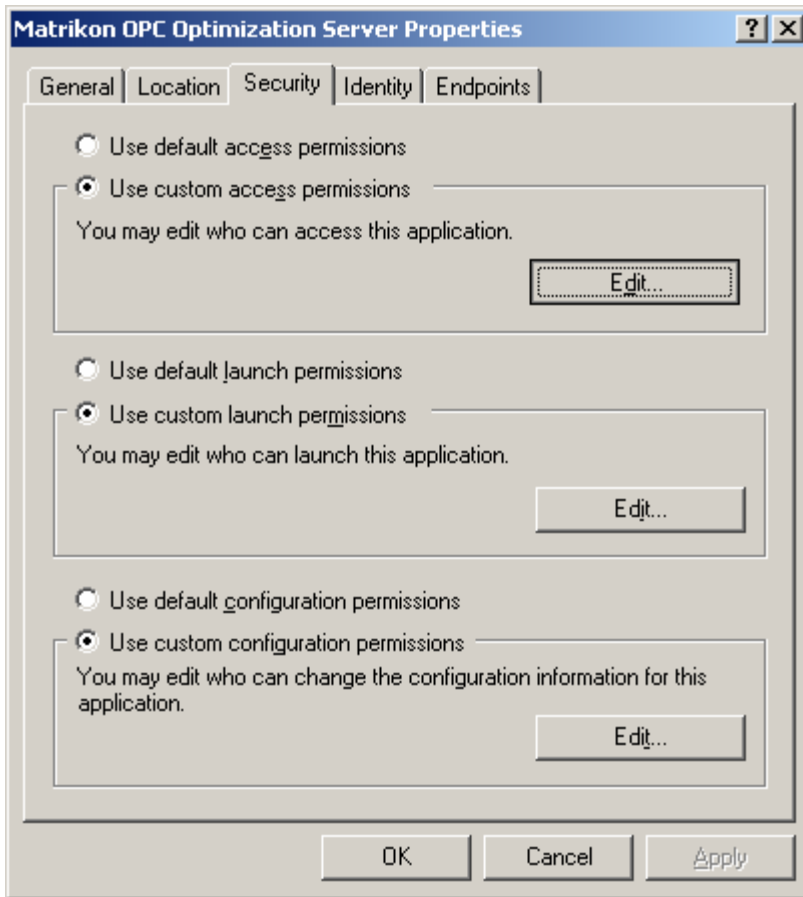
7) Click on “Properties.”



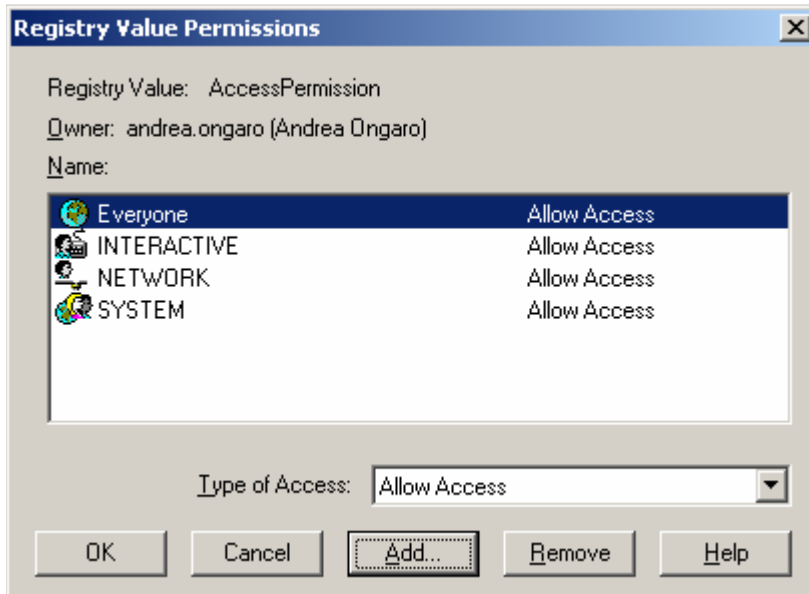
8) You can have your Authentication level set to either Default or Connect.

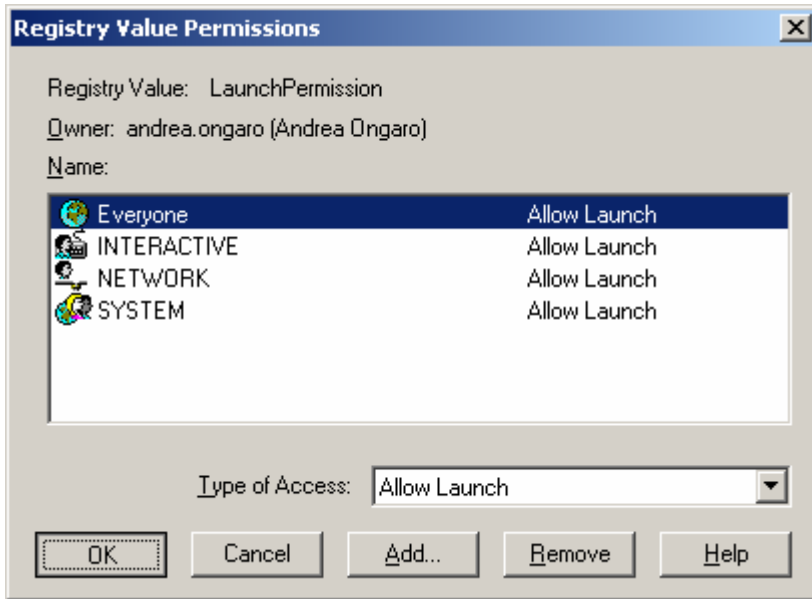


- 9) Under the "Security" tab, select "use custom access permissions" and "use custom launch permissions."

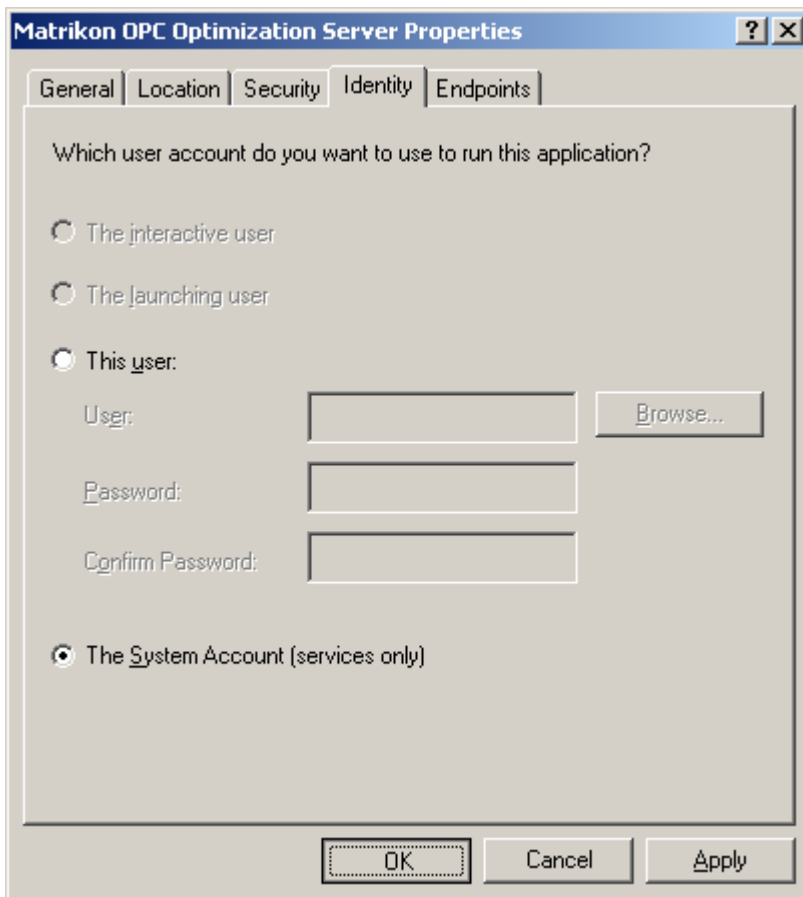


- 10) Once you have done this, press "Edit" under both the access and launch permissions, and ensure the groups of "Everyone," "Interactive," "Network," and "System" are present, with full permissions.





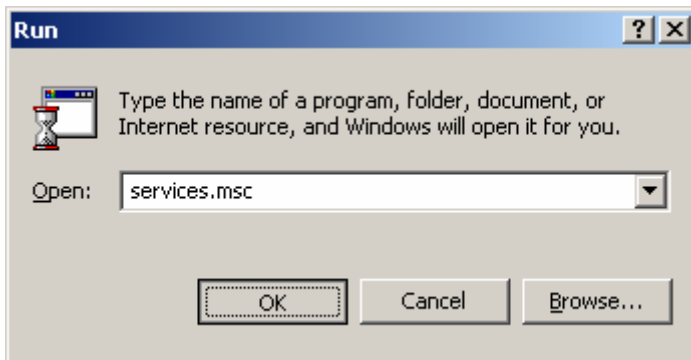
11) On the "Identity" tab, please select either the "Interactive User" or the "System Account." Ensure that you do **NOT** have "The Launching User" selected.



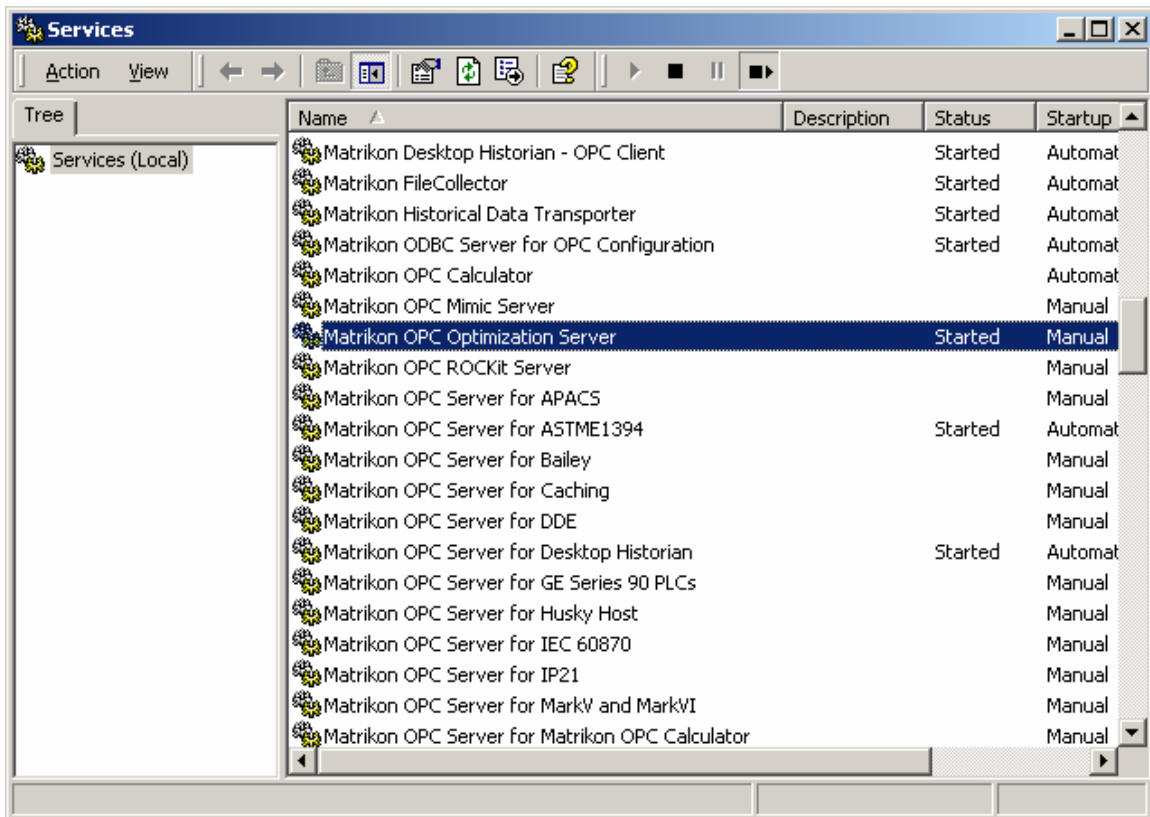
- 12) Once you have made the changes for your OPC Servers, you may close the DCOM configuration window.

In order for DCOM changes to take effect, you will have to restart the applications or services. If your OPC Software is running as a service, please follow these steps.

- 1) Go to Start, then Run, and type in “services.msc”



- 2) Once in the services window, please select the OPC Server to which you have made DCOM changes.



- 3) Right Click on the server, and press “Stop.”

- 4) Right click on the service again and press "Start." Once you have done this, your DCOM changes have taken effect.

Your **DCOM** is now setup to accept all incoming connections.

NOTE: DCOM has limitations for connectivity when operating on separate domains/workgroups. These steps may work but, depending on individual networks, additional settings and components may be required. Please contact OPC Support for additional information.

Phone: (780) 945-4011

E-Mail: Support@MatrikonOPC.com